

Nanni Diesel Marine Generators

nannidiesel

energy in blue

The Nanni Diesel marine generator line covers a power range up to 526 kVA at continuous duty with a rated rpm between 1500 and 3000 rpm. The Kubota and Doosan based marine generators offer a solution for any energy requirement on board.

The 3.5 kW and 6 kW enclosed models are designed for pleasure applications (sailing yachts or cruisers). Particularly compact, light and silent (54 dB at 7 metres) they ensure comfort on board .

The Kubota based marine generators from 9 kVA to 36 kVA benefit from the improvements of the E-TVCS combustion system, allowing them to comply easily with the most stringent anti-pollution and sound-level requirements. Due to their versatility, they are suited for both pleasure and commercial applications.

The Doosan based range from 87 kVA to 526 kVA includes marine generators that are mounted on a steel frame and flexible suspension mounts. These middle and high power generators are especially designed to supply electrical energy on board for fishing, service or commercial boats.

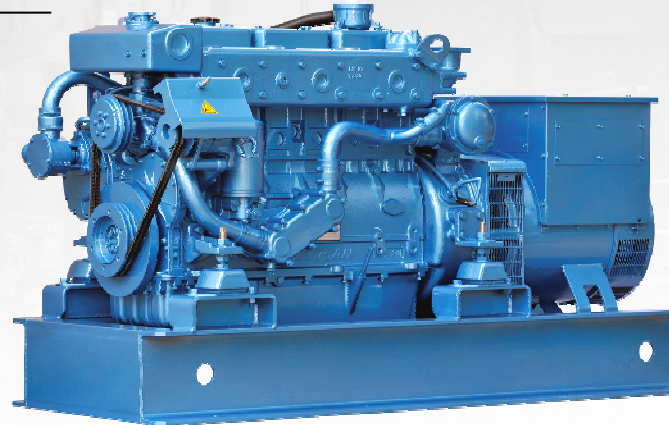
Main advantages

- × Heat exchanger
- × Dry or water-cooled exhaust elbow
- × Temperature regulation
- × Stable frequency
- × Steel frame with flexible suspension mounts for the 87 to 526 kVA range
- × Reliable and secure
- × Easy to connect
- × Continuous duty for professional applications
- × Engines based on Kubota or Doosan

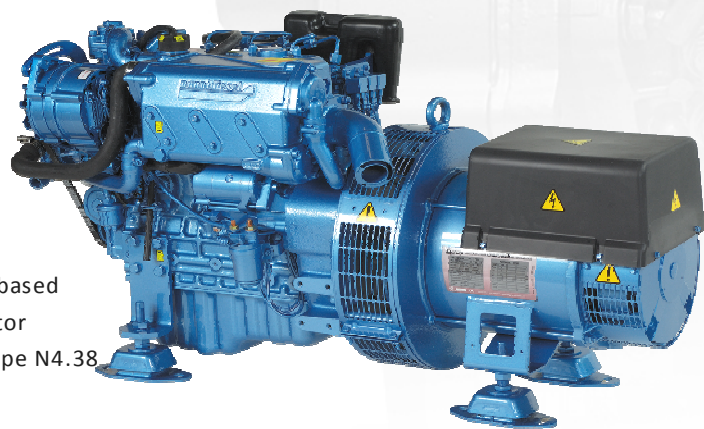
6kW enclosed Kubota based
marine generator



87kVA Doosan based marine generator
Leroy Somer LSAM 44.2 VS45 alternator



12kVA Kubota based
marine generator
marinisation type N4.38



Nanni Industries S.A.S. France - 11, Avenue Mariotte-Zone Industrielle - BP 107- 33260

La Teste France - Tel : +33 (0)5 56 22 30 60 - Fax : +33 (0)5 56 22 30 79

E-mail : contact@nannidiesel.com

Model	Electrical Characteristics			Dimensions and Weight				Engine Characteristics							
	Power (kW)	Volts (V)	Amperes (A)	Length (mm)	Width (mm)	Height (mm)	Weight w/o frame (kg)	Base engine	Type	Nb. of Cylinders	Displacement (cm ³)	Intake	Rated rpm (rpm)	Cooling	Fuel consum. (l/h)
DM 350	3.5	230	15	590	405	515	105	Farymann	18W	1	290	Atmospheric	3 000	Direct	1.7
DM 600	6	230	26	640	480	530	128	Kubota	Z482	2	479	Atmospheric	3 000	Exchanger	2.2
9 kVA	7,2	400	13	965	484	590	230	Kubota	D 1105 BG	3	1 123	Atmospheric	1 500	Exchanger	2.5
12 kVA	9,6	400	17	1 090	484	590	250	Kubota	V 1505 BG	4	1 498	Atmospheric	1 500	Exchanger	3.3
19 kVA	15,2	400	27	1 106	554	660	340	Kubota	V 2203 BG	4	2 197	Atmospheric	1 500	Exchanger	4.8
29 kVA	23,2	400	42	1 300	554	630	550	Kubota	V 3300 BG	4	3 318	Atmospheric	1 500	Exchanger	7.4
36 kVA	28,8	400	52	1 300	670	630	550	Kubota	V 3300 T BG	4	3 318	Turbo	1 500	Exchanger	8.8
87 kVA*	69,6	400	126	1 867	770	925	1 120	Doosan	AD 136	6	8 071	Atmospheric	1 500	Exchanger	20
110 kVA*	88	400	159	1 787	800	826	975	Doosan	AD 066 TIF	6	5 785	Turbo & intercooler	1 500	Exchanger	24
123 kVA*	98,4	400	178	1 946	770	925	1 238	Doosan	AD 136 T	6	8 071	Turbo	1 500	Exchanger	27
134 kVA*	107,2	400	193	2 047	825	925	1 323	Doosan	AD 136 TI	6	8 071	Turbo & intercooler	1 500	Exchanger	29
174 kVA*	139,2	400	251	2 089	825	1 283	1 415	Doosan	AD 086 TI	6	8 071	Turbo & intercooler	1 500	Exchanger	37
200 kVA*	160	400	289	2 257	872	1 243	1 714	Doosan	AD 196 TIF	6	11 051	Turbo & intercooler	1 500	Exchanger	44
240 kVA*	192	400	346	2 223	854	1 072	1 835	Doosan	AD 126 TI	6	11 051	Turbo & intercooler	1 500	Exchanger	51
355 kVA*	284	400	512	2 093	1 222	1 074	2 408	Doosan	AD 158 TI	8 V	14 618	Turbo & intercooler	1 500	Exchanger	74
422 kVA*	337,6	400	609	2 351	1 222	1 169	2 785	Doosan	AD 180 TI	10 V	18 273	Turbo & intercooler	1 500	Exchanger	89
526 kVA*	420,8	400	759	3 025	1 222	1 199	3 195	Doosan	AD 222 TI	12 V	21 927	Turbo & intercooler	1 500	Exchanger	112

A new range

The Nanni Diesel generators are the result of numerous years of experience developing marine engines and equipment which is suitable for the rugged marine environment. The new Kubota and Doosan based generator range offers high quality and durability. The Kubota E-TVCS combustion system reduces the fuel consumption and lowers the particulate emissions.

Single-phase, fully enclosed generators with 3.5 kW and 6 kW

These two models intended for pleasure applications deliver a current of 26 Amperes for the 6 kW and 15 Amperes for the 3.5 kW at 230V. They come standard with a very sophisticated (20 functions) digital instrument panel which is easy to connect and compatible with all types of existing installations. Maintenance is made very easy due to 5 removable side panels of the enclosure.

Five three-phase generators from 9 kVA to 36 kVA

Designed for both pleasure and commercial applications, these Kubota based marine generators benefit from state of the art technology: all engines are very reliable, extremely clean and incredibly fuel efficient with nominal power designed for continued service. Their cooling is ensured by a heat exchanger and the possibility of a one- or three-phase output option. Enclosure optional.

Ten three-phase generators from 87 kVA to 526 kVA

Suited for commercial applications, these Doosan based models benefit from an electronic speed regulator: the rated rpm of the engine is more stable and ensures an optimal current frequency stability for continuous duty. A heat exchanger takes care of the cooling of the ensemble.